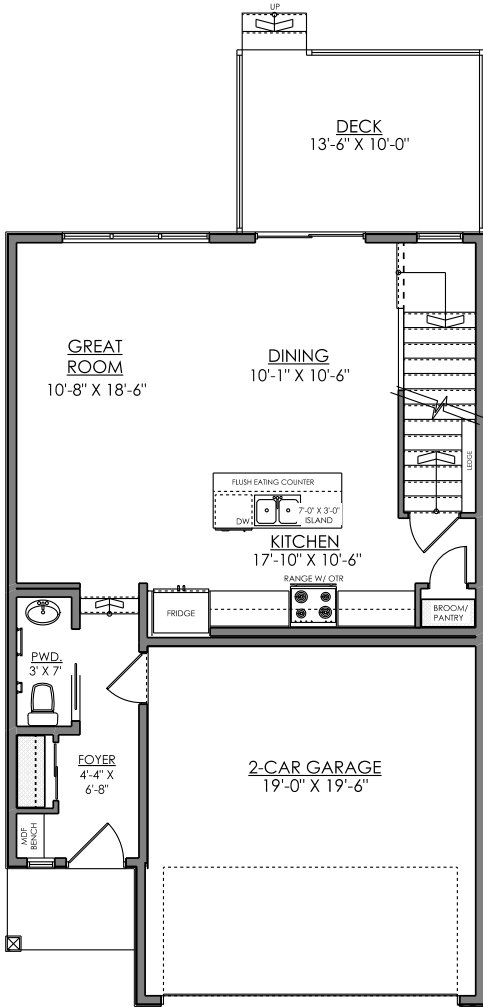


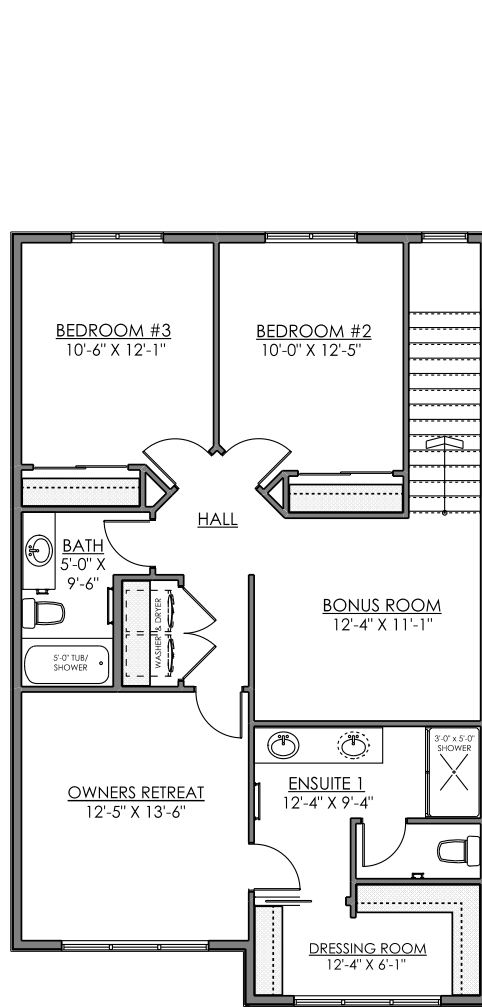
Rainier

1673 sq. ft.

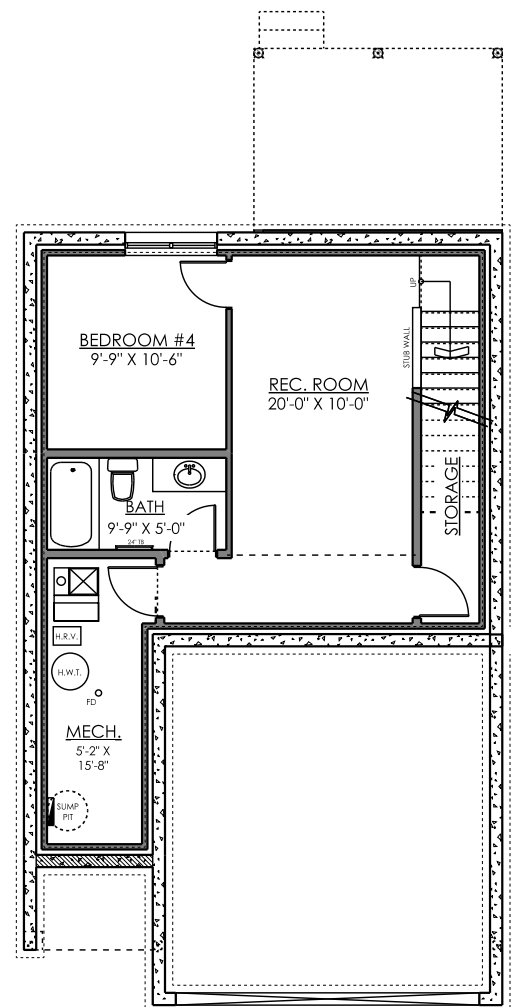
3 bedrooms + 2.5 bathrooms + bonus room



MAIN FLOOR PLAN
677 SQ. FT.



SECOND FLOOR PLAN
996 SQ. FT.



OPTIONAL BASEMENT PLAN
432 SQ. FT.

Rainier

Exterior Elevations

MODERN FARMHOUSE

Available in Langdale & Uplands



LEVEL 1



LEVEL 3



LEVEL 2

CRAFTSMAN

Available in Langdale & Uplands



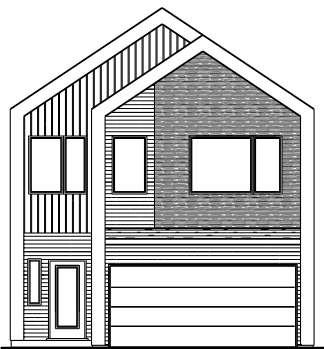
LEVEL 4



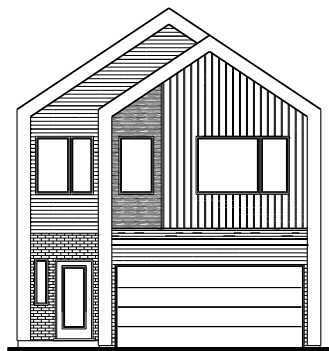
LEVEL 5

MODERN

Available in Uplands



LEVEL 6



LEVEL 7

MOUNTAIN CONTEMPORARY

Available in Uplands



LEVEL 9



LEVEL 10