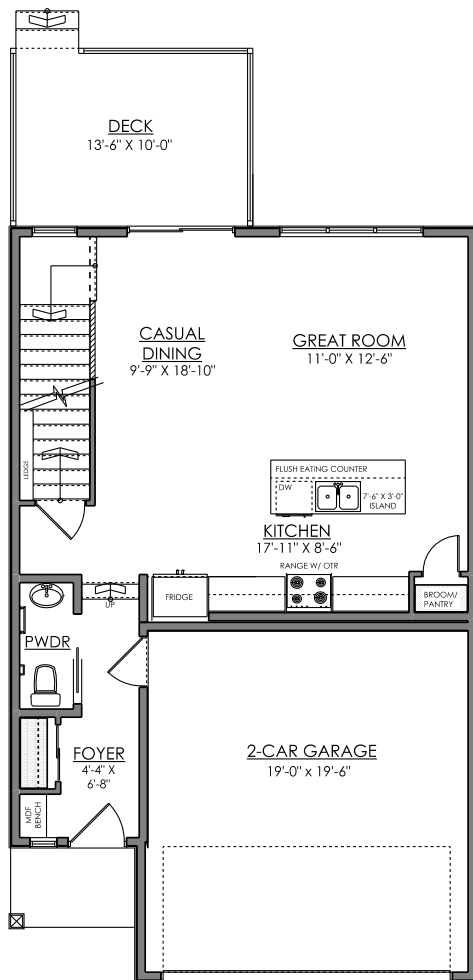


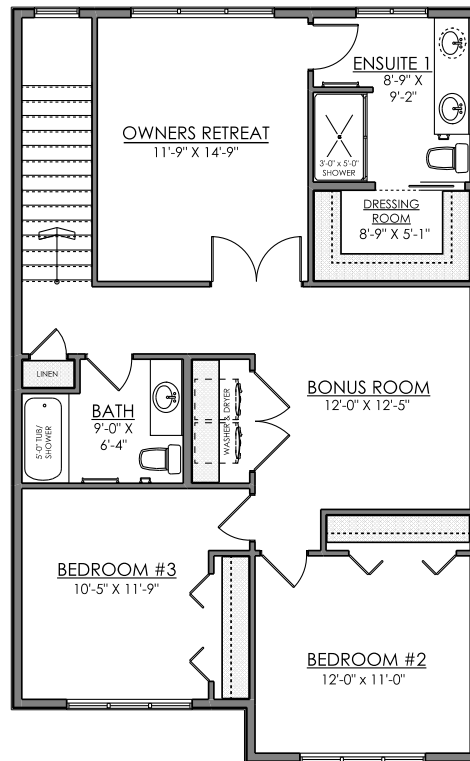
# Logan

1672 sq. ft.

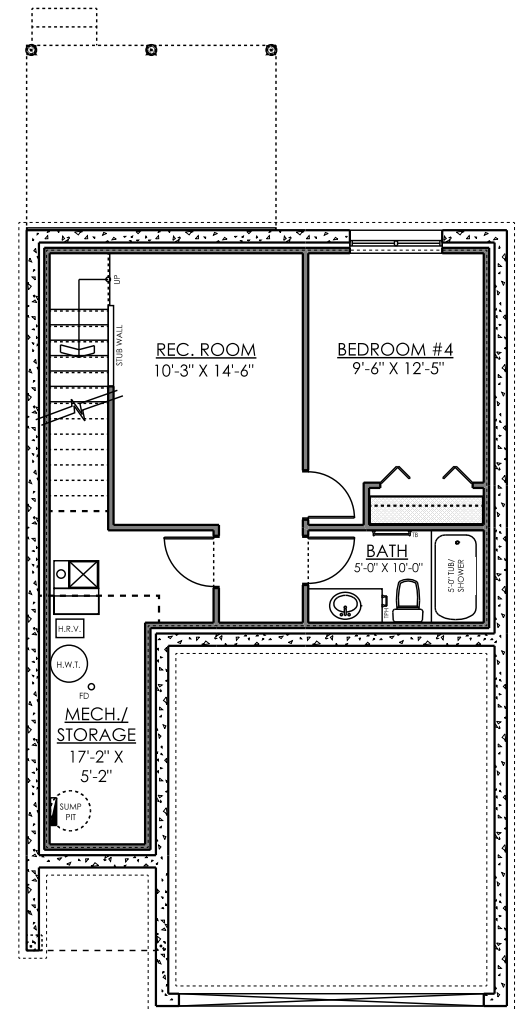
3 bedrooms + 2.5 bathrooms + bonus room



**MAIN FLOOR PLAN**  
**677 SQ. FT.**



**SECOND FLOOR PLAN**  
**995 SQ. FT.**



**OPTIONAL BASEMENT PLAN**  
**422 SQ. FT.**

# Logan

## Exterior Elevations

### MODERN FARMHOUSE

Available in Langdale & Uplands



LEVEL 1



LEVEL 2

### CRAFTSMAN

Available in Langdale & Uplands



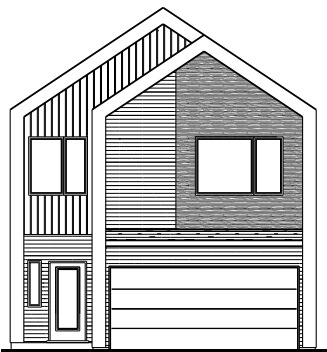
LEVEL 4



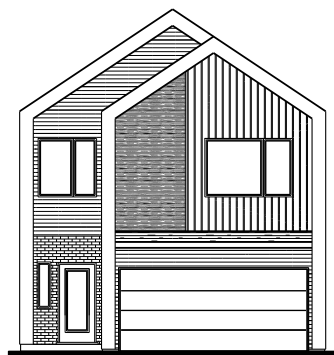
LEVEL 5

### MODERN

Available in Uplands



LEVEL 6



LEVEL 7

### MOUNTAIN CONTEMPORARY

Available in Uplands



LEVEL 9



LEVEL 10