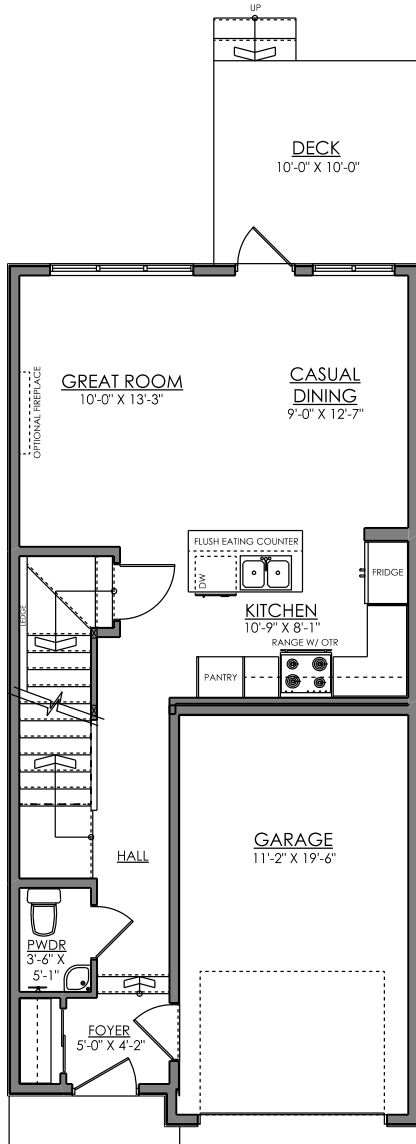


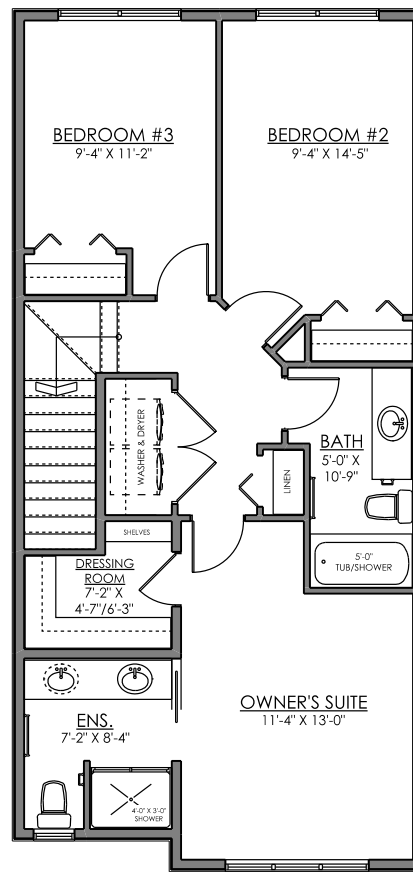
# Jasper

1376 sq. ft.

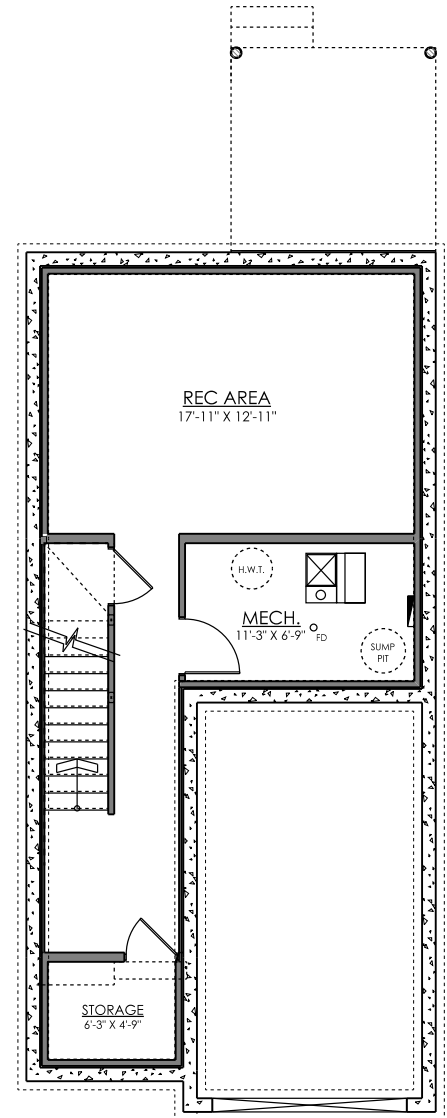
3 bedrooms + 2.5 bathrooms



**MAIN FLOOR PLAN**  
594 SQ. FT.



**SECOND FLOOR PLAN**  
782 SQ. FT.



**OPTIONAL BASEMENT PLAN**  
373 SQ. FT.

# Jasper

## Exterior Elevations

### MODERN FARMHOUSE

Available in Langdale & Uplands



LEVEL 1



LEVEL 3



LEVEL 2

### CRAFTSMAN

Available in Langdale, Trumpeter & Uplands



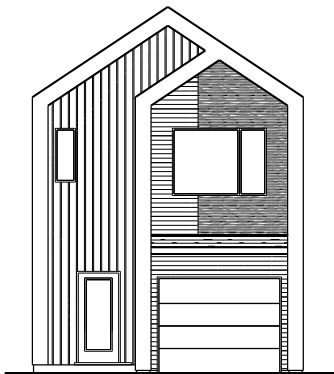
LEVEL 4



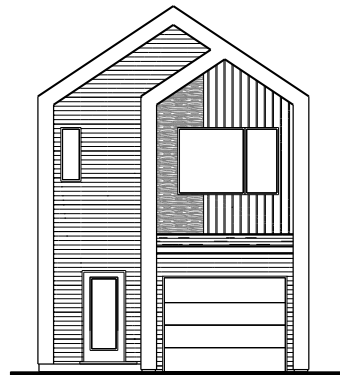
LEVEL 5

### MODERN

Available in Uplands



LEVEL 6



LEVEL 7

### MOUNTAIN CONTEMPORARY

Available in Uplands



LEVEL 9



LEVEL 10