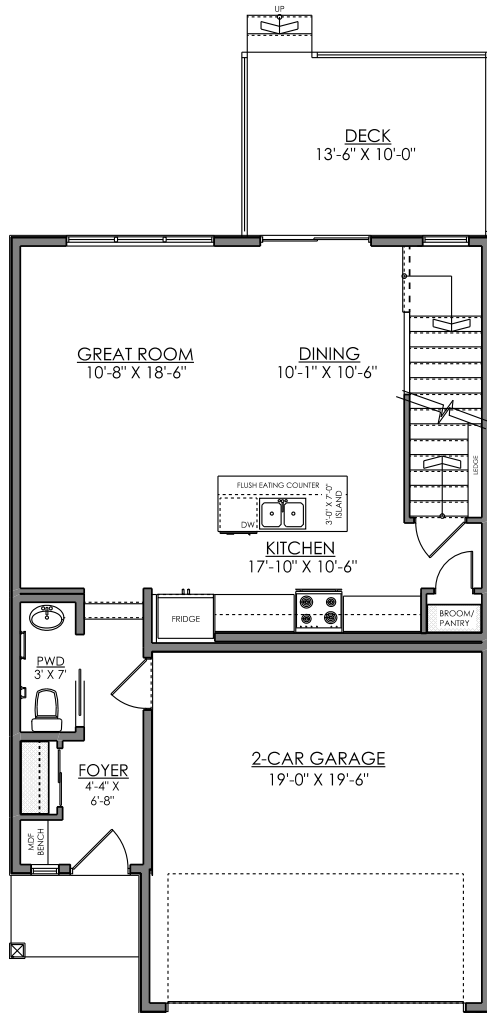


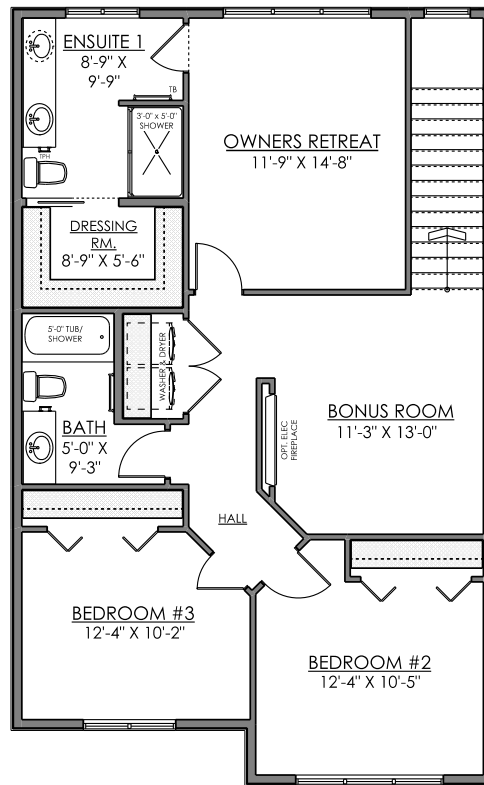
# Hayes

1673 sq. ft.

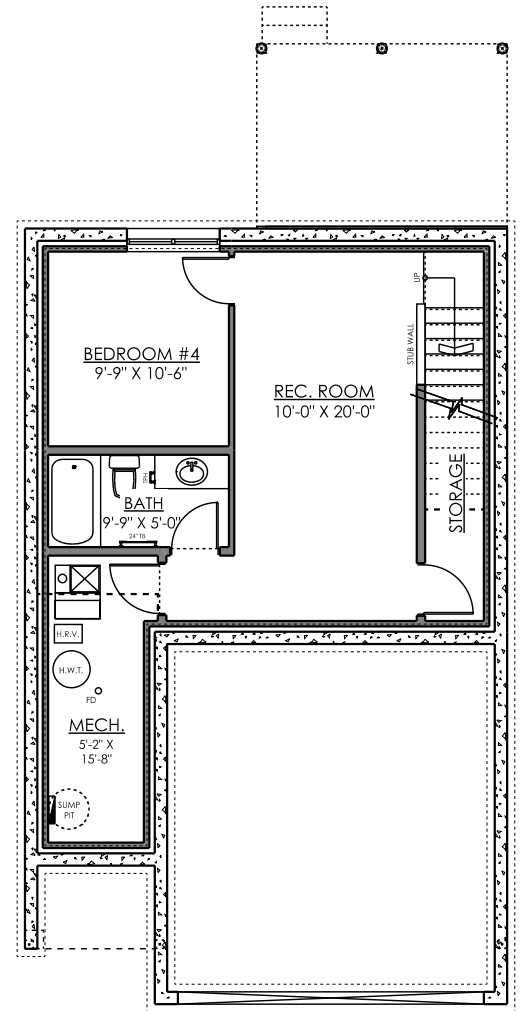
3 bedrooms + 2.5 bathrooms + bonus room



**MAIN FLOOR PLAN**  
677 SQ. FT.



**SECOND FLOOR PLAN**  
996 SQ. FT.



**OPTIONAL BASEMENT PLAN**  
432 SQ. FT.

# Hayes

## Exterior Elevations

### MODERN FARMHOUSE

Available in Langdale & Uplands



LEVEL 1



LEVEL 2

### CRAFTSMAN

Available in Langdale & Uplands



LEVEL 4



LEVEL 5

### MODERN

Available in Uplands



LEVEL 6



LEVEL 7

### MOUNTAIN CONTEMPORARY

Available in Uplands



LEVEL 9



LEVEL 10